

# CORDEVILLE

A ROSEWOOD RESORT

## FLOOR PLANS & CAPACITY GUIDE



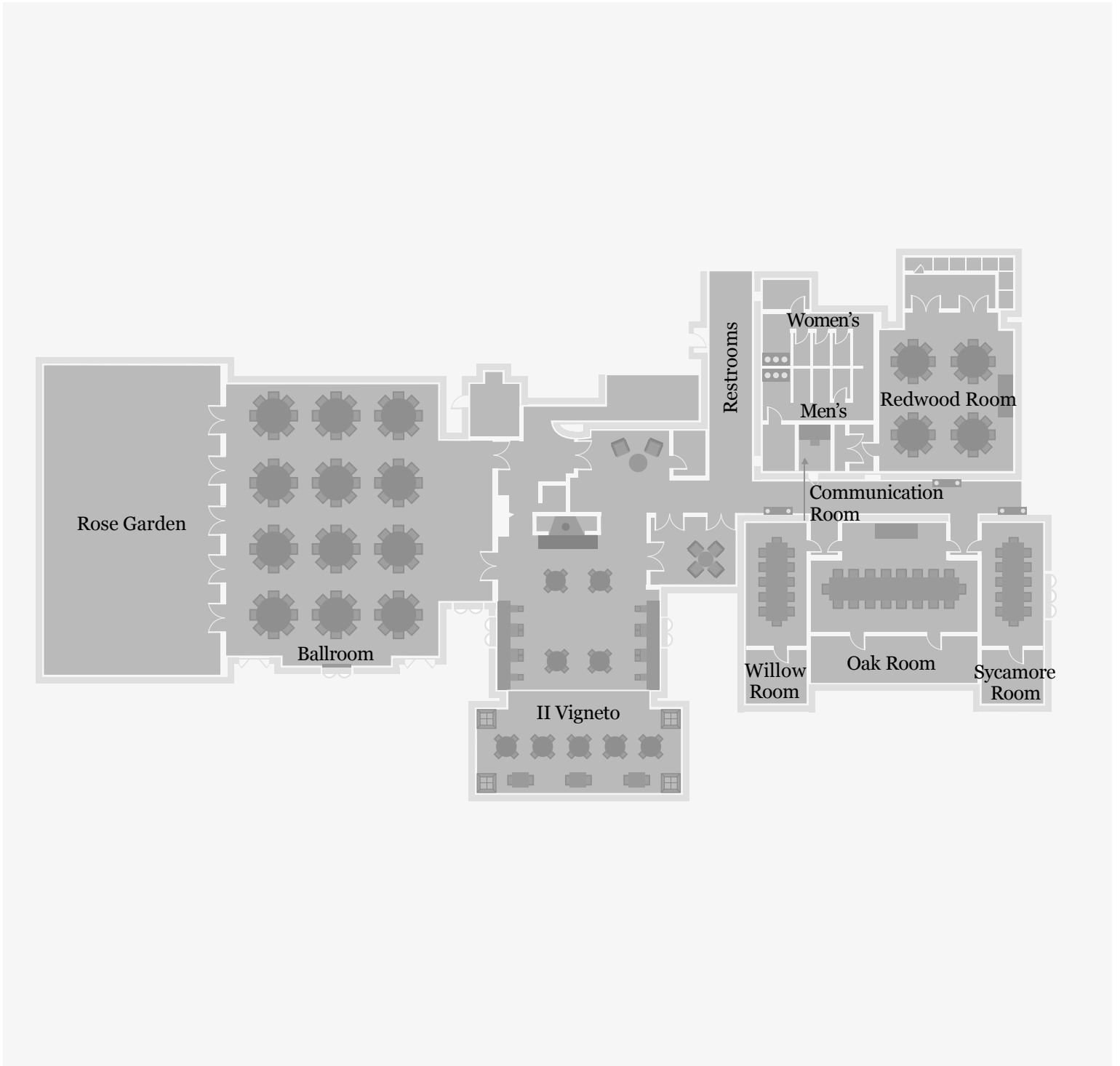
ONE CORDEVILLE CLUB DRIVE, SAN MARTIN, CALIFORNIA 95046

T. +1 408.695.4500 E. cordeville@rosewoodhotels.com

# CORDEVALLE

A ROSEWOOD RESORT

## FLOOR PLAN



# CORDEVALLE

A ROSEWOOD RESORT

## CAPACITY AND DIMENSIONS

	<i>SqFt</i>	<i>Size (Ft)</i>	<i>Ceiling</i>	<i>Reception</i>	<i>Dining</i>	<i>Theatre</i>	<i>Classroom</i>	<i>Conference</i>	<i>U-Shape</i>
<b>Ballroom</b>									
Full Capacity	2663	43'x53'	12'6"						
Executive Chairs				-	-	-	92	30	38
Banquet Chairs				200	180	180	120	38	46
<b>Rose Garden</b>									
Full Capacity	2500	50'x50'	-						
Executive Chairs				-	-	-	24	18	20
Banquet Chairs				200	50	40	33	30	26
<b>Redwood Room</b>									
Full Capacity	724	26'x28'	11'						
Executive Chairs				-	-	-	24	18	20
Banquet Chairs				75	50	40	33	30	26
<b>Oak Room</b>									
Full Capacity	467	23'x17'	11'						
Executive Chairs				-	-	-	-	20	19
Banquet Chairs				-	24	-	-	24	22
<b>Sycamore Room</b>									
Full Capacity	273	13'x21'	11'						
Executive Chairs				-	-	-	-	12	11
Banquet Chairs				-	12	-	-	12	11
<b>Willow Room</b>									
Full Capacity	273	13'x21'	11'						
Executive Chairs				-	-	-	-	12	11
Banquet Chairs				-	12	-	-	12	11